



# Valley of the Sun Fainting Goat Show

## Directions to Ramona Jr. Fairgrounds from I-15 South (Faster Mountain Route)

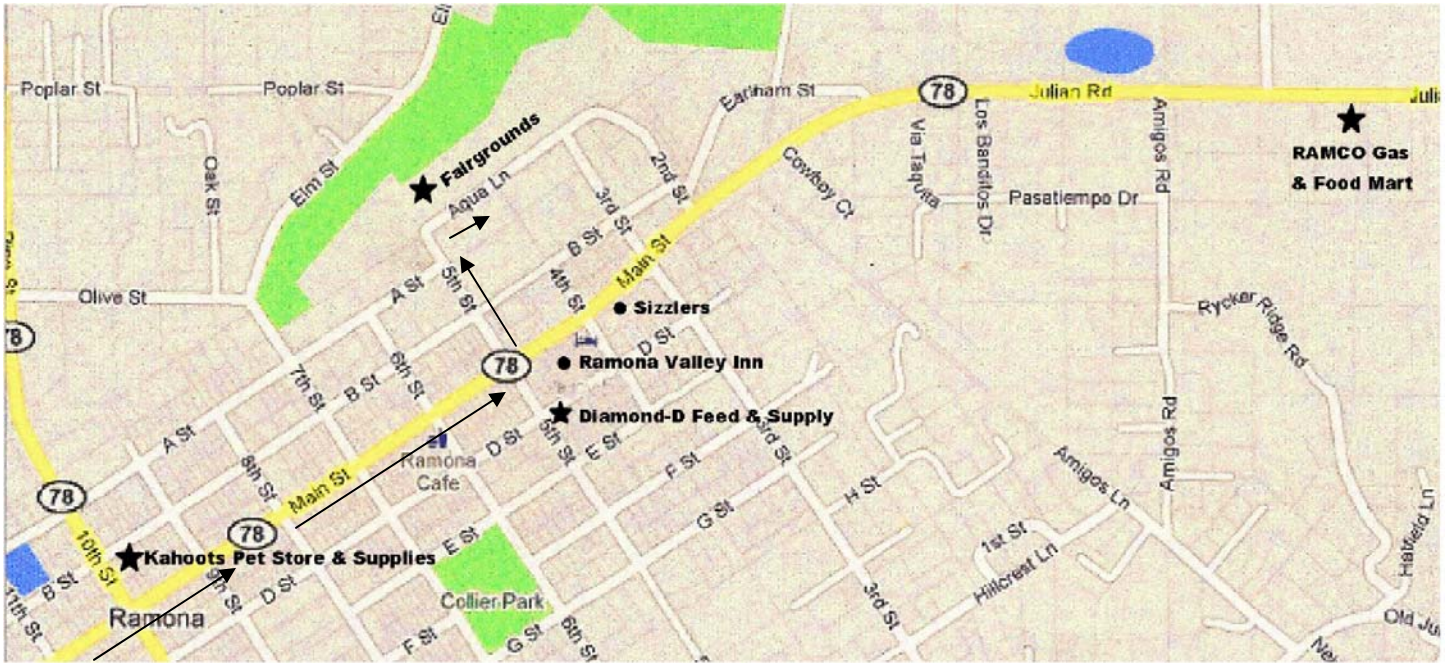
The following directions are not recommended for those pulling heavy trailers or do not like steep mountainous roads. This road is fine for vehicles and light trailers.

		Directions	Nearest town to intersection	Miles
	1	Take <b>I-15 S</b>		
	2	Take <b>CA-78 East</b> towards Ramona	Escondido	1.5 mi
	3	Turn <b>right</b> at <b>N Broadway/State Route 78 E</b>		0.4 mi
	4	Turn <b>left</b> at <b>E Washington Ave</b>		1.0 mi
	5	Turn <b>right</b> at <b>N Ash St</b>		0.5 mi
	6	Continue onto <b>CA-78 E/San Pasqual Valley Rd</b>	<i>Winds up mountain</i>	16.2 mi
	7	Turn <b>left</b> at <b>Main Street/CA-78</b>	Ramona	0.5 mi
	8	Turn left at 5th Street.		0.2 mi
	9	Turn right at Aqua Lane. Fairground is on your left.		

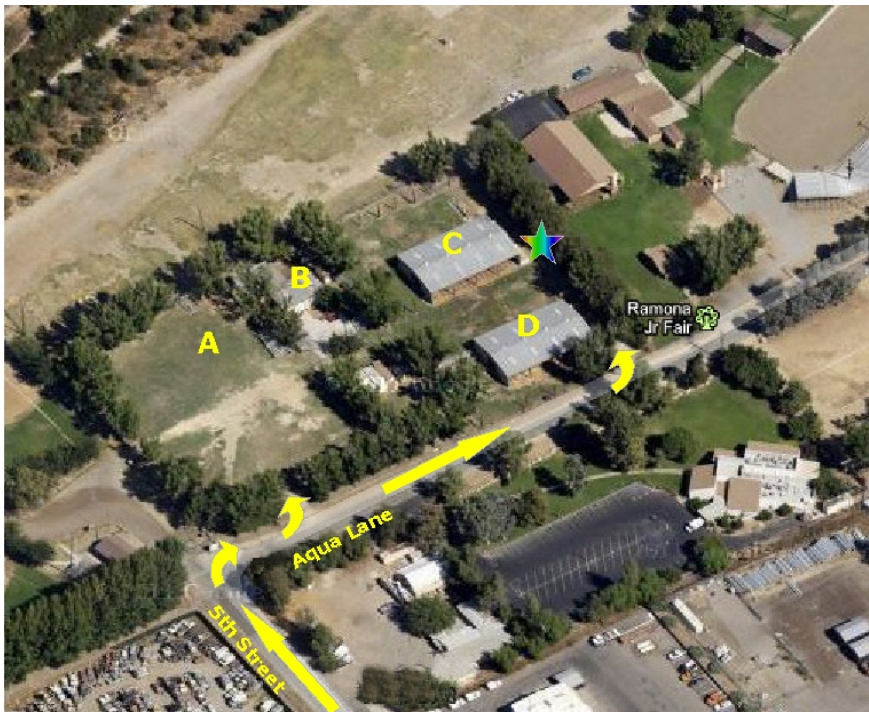


# Valley of the Sun Fainting Goat Show

## Ramona Area Map



## Jr. Fairgrounds Area Map



### Legend

- A = Camping Area
- B = Restrooms
- C = Goat Barn
- D = Show Barn
- ★ = Goat Loading/Unloading Zone